

A DEVELOPMENT BY  
TRICONNA REAL ESTATE

# SWISS GARDENS





# SWISS GARDENS

Swiss Garden Estate is more than just a place to live; it's a sanctuary where luxury meets tranquility. Whether you're seeking a serene and safe neighborhood to raise your family or an investment location with a high return on investment, Swiss Garden Estate offers the perfect balance for all your needs!

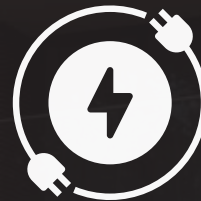
# AMENITIES



GOOD  
DRAINAGE



GOOD ROAD  
ACCESS



GOOD  
ELECTRICITY



24/7  
SECURITY

# FACILITIES



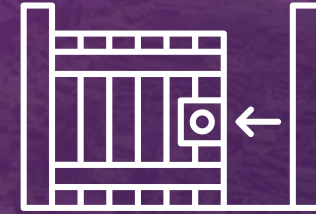
GREEN AREAS



PLAYGROUND



HEALTHCARE  
FACILITIES



GATE HOUSE



# PAYMENT PLANS

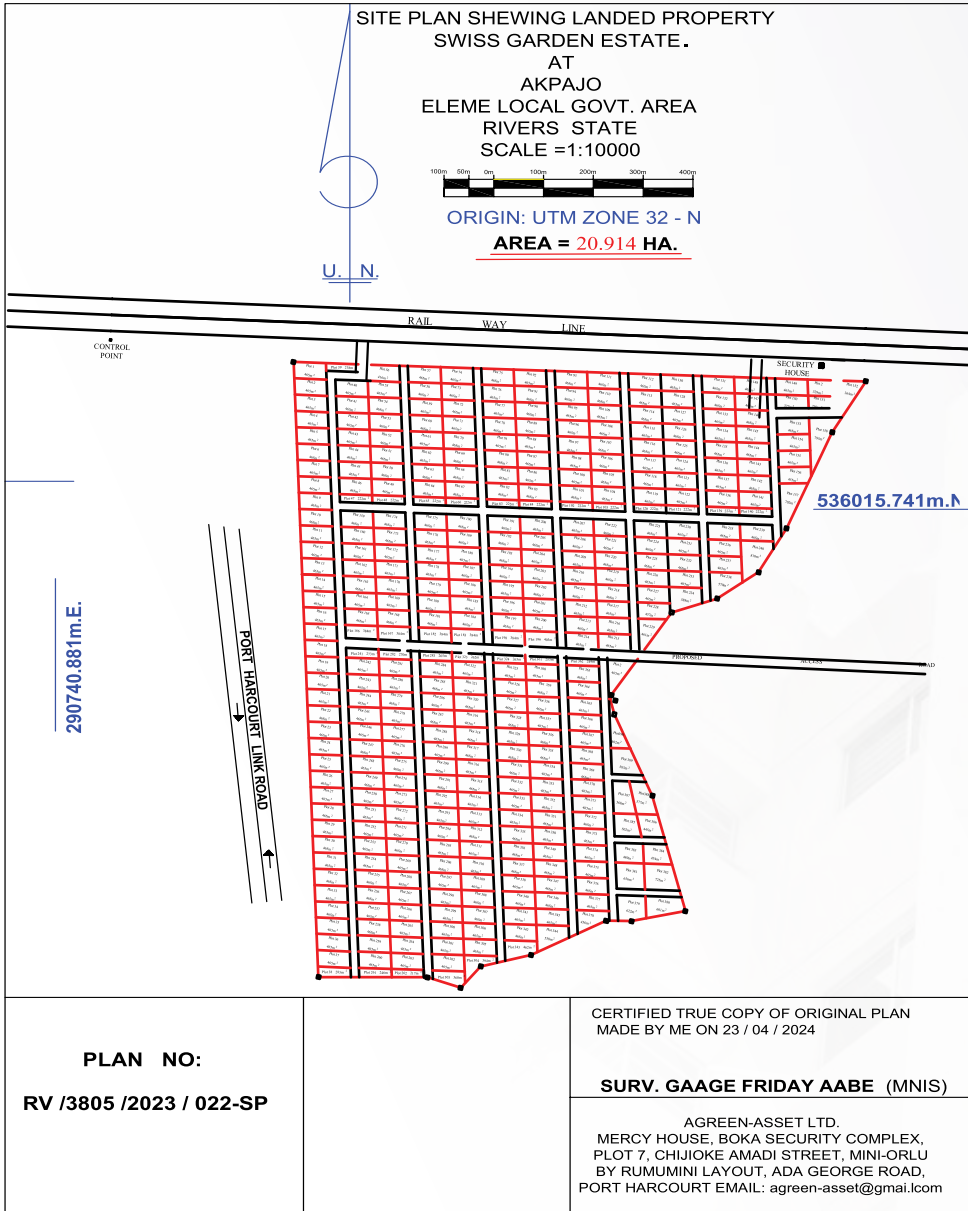
RESIDENTIAL PLOT

**N3M**

OUTRIGHT PAYMENT

DURATION	AMOUNT	INITIAL DEPOSIT
0-3 MONTH	<b>3,000,000</b>	<b>500,000</b>
0-6 MONTHS	<b>3,100,000</b>	<b>500,000</b>
0-12 MONTHS	<b>3,500,000</b>	<b>500,000</b>

# SWISS GARDENS LAYOUT PLAN



# FAQS

Q: Where is SWISS GARDEN ESTATE located?

A: SWISS GARDEN ESTATE is situated at Akpajo, 10 minutes drive from Indorama Petrochemical.

Q: What title document does the land carry?

A: SWISS GARDEN has a Deed of Conveyance and a Registered Survey Plan, and it is 100% free from any encumbrances and litigation.

Q: What is the nature and topography of SWISS GARDEN ESTATE?

A: SWISS GARDEN ESTATE is a 100% table dry land.

Q: What kind of infrastructure will be installed in the estate?

A: SWISS GARDEN ESTATE comes with the following features: Perimeter fencing, Electricity, Security, Drainage, a Gatehouse, and a Graded Internal Road Network.

Q: Do I have to pay any additional fees after paying for the land?

A: There are no extra charges beyond the land price.

Q: Do I have to pay for the Survey and Deed of Conveyance?

A: No. You'll get a free Survey Plan and a Deed of Conveyance after making complete payment on your plot(s)

Q: What is the cost of a plot of land at SWISS GARDEN ESTATE?

A: A plot of land at SWISS GARDEN ESTATE is currently selling at N3,000,000 per plot for out-right purchase.

Q: 465 sqm per plot. (50 by 100).

A: What is the plot size?

# ABOUT

Triconna is a value-driven brand dedicated to providing you with the best real estate investment solutions that are habitable, affordable, sustainable, and tailored to your needs. Giving you optimal value for your investment.

We are passionately driven to turn the dream of affordable homes into a reality for the common man. Our vision inspires us every day to create innovative solutions, build stronger communities, and ensure that everyone has a place to call home.

## OTHER PROPERTIES


**Achievers  
Estate**



**SKY VIEW  
ESTATE**

**LISBON**  
HOUSING ESTATE II



# CONTACT

 +234-916-000-5526, +234 916-000-5527.

 [info@triconna.com](mailto:info@triconna.com)  [triconna.com](http://triconna.com)



NO. 167A Ebufegha Plaza, Ada George, Port Harcourt.

   @triconna